



Grand Sierra

Vinyl - Grade 6



Spice
518729



Bamboo
518375



Suede
517916



Birch
519252



Autumn Leaf
523155



Crocus
517709



Fire Red
518382



Almond
519030



Bluestone
523156



Wheat
517706



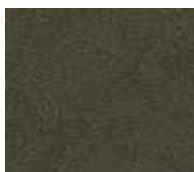
Burro
518728



Plum
518380



Spice
518729



Slate
524452



Seafoam
521544



Azure
517708



Bombay
522172



Shadow
518379



Cranberry
518711



Gray
517705



Teal
517734



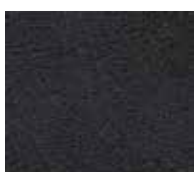
Colonial Blue
519251



Chestnut
526796



Oxblood
517702



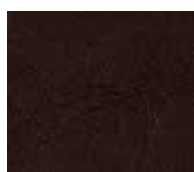
Charcoal
519000



Hunter
518881



Navy
519029



Chocolate
517707



Black
517917



| | |
|--------------------------|---|
| Content | 100% vinyl face, polyester knit backing |
| Finish | PreFixx [®] protective finish for increased stain resistance and easy cleaning. Bleach cleanable and may be disinfected with a variety of hospital grade disinfectants without discoloring or damaging the finish. Disinfection does not replace the need for regular care and maintenance. |
| Width | 54 in. [137 cm] |
| Weight | 36 oz/lin. yd. [24 oz/yd ²] / 1.021 g/lin. m [680 g/m ²] |
| Performance Requirements | Meets or exceeds ACT [®] Performance Guidelines |



Also meets or exceeds:

- BIFMA, Class A
- Boston Fire Dept. IX-1
- California Technical Bulletin 117-2013, Section 1
- FAR 25.853A
- Federal Standard CID A-A-2950-A
- FMVSS-302
- IMO Part 8 Upholstered Furniture 3.1 Smoldering Cigarette
- IMO Part 8 Upholstered Furniture 3.2 Propane Flame
- NFPA 701 Small Scale
- NFPA 260, Class 1
- Port Authority of NY/NJ
- UFAC Fabric, Class 1
- CFFA-1a wyzenbeek - 1.3 million double rubs abrasion
- Fungal resistance ASTM G-21-13
- Bacterial resistance AATCC 147-2011 & AATCC 100-2004

| | |
|--------------|---|
| Applications | Indoor/Outdoor |
| | <ul style="list-style-type: none"> • Corporate Office • Healthcare • Recreational Vehicles <ul style="list-style-type: none"> • Food Service • Hospitality and Entertainment • Retail |

Multiple factors affect fabric durability and appearance retention, including end-user application and proper maintenance. Wyzenbeek results above 100,000 double rubs have not been shown to be a reliable indicator of increased fabric lifespan.

Though our upholstery can be used in many applications, customers are responsible for selecting an upholstery with attributes that meet the requirements of the specific end-use application – not all upholstery is suitable for all applications.

For additional cleaning instructions and detailed specification information, visit: www.omnova.com



World Headquarters
 25435 Harvard Road
 Beachwood, OH 44122
 United States
 PHONE +1 216 682-7000
 FAX +1 216 453-0104

ALL OMNOVA PRODUCTS AND SERVICES ARE OFFERED AND SOLD SUBJECT TO THE OMNOVA STANDARD TERMS AND CONDITIONS OF SALE AGREEMENT SET FORTH AT WWW.OMNOVA.COM

*ACT Performance Guidelines icons are registered certification marks owned by the Association for Contract Textiles, Inc. BOLTAFLEX and PREFIX are registered trademarks of OMNOVA Solutions Inc. Designed and manufactured by OMNOVA Solutions Inc.

© 2015 OMNOVA Solutions Inc. DTC September 2015

