

CONTRACT

COLLECTION



CCB INDUSTRIES, LLC
CAROLINA CUSTOM BOOTH Co.
CAROLINA CUSTOM TABLE Co.

Vinyl - Grade 6

T. 1.888.880.3127

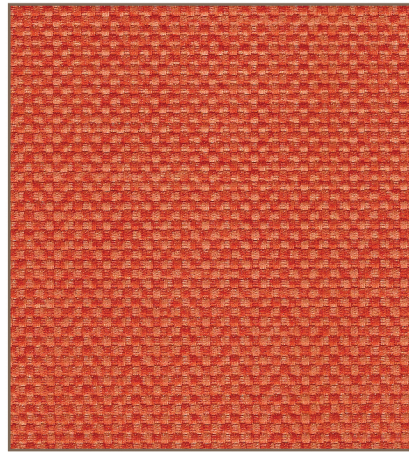
carolinacustombooth.com



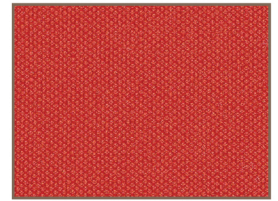
Kaleidoscope



KAL-4413
KALEIDOSCOPE BAZAAR



MAG-1963
MAGLIA CORAL



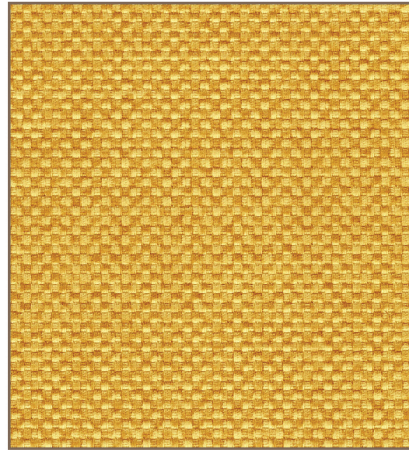
STX-8812
SILVERTEX POPPY



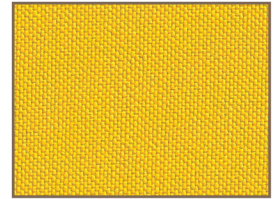
CHA-1531
CHAMBRAY BRIQUETTE



KAL-4411
KALEIDOSCOPE SAFFRON



MAG-1961
MAGLIA GOLDENROD



STX-8842
SILVERTEX LIMONCELLO



CHA-1529
CHAMBRAY SUN



KAL-4401
KALEIDOSCOPE CITRON



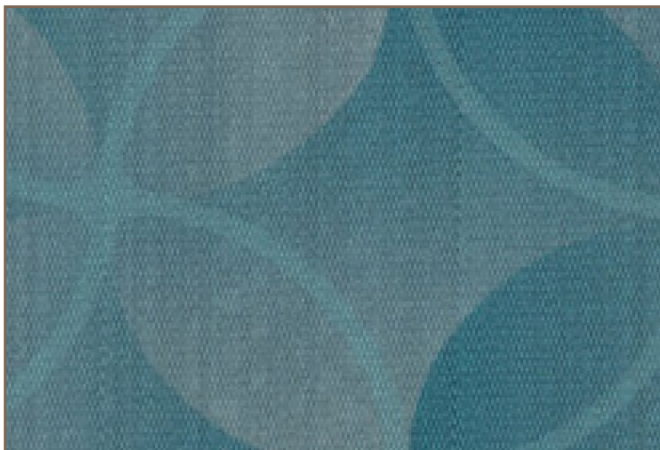
MAG-1954
MAGLIA SAGE



STX-8834
SILVERTEX ACID



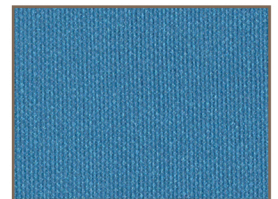
CHA-1525
CHAMBRAY CITRON



KAL-4406
KALEIDOSCOPE TEAL



MAG-1956
MAGLIA AGEAN



STX-8803
SILVERTEX TURQUOISE



CHA-1526
CHAMBRAY AQUAMARINE

Kaleidoscope



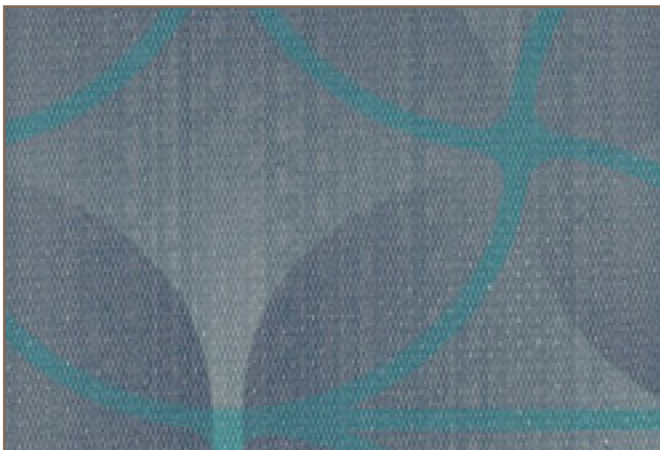
KAL-4409
KALEIDOSCOPE CHAMPAGNE



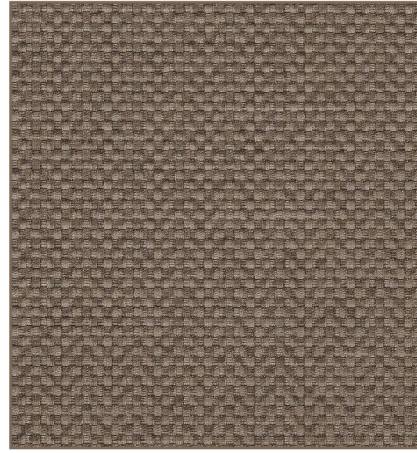
KAL-4410
KALEIDOSCOPE SMOKEHOUSE



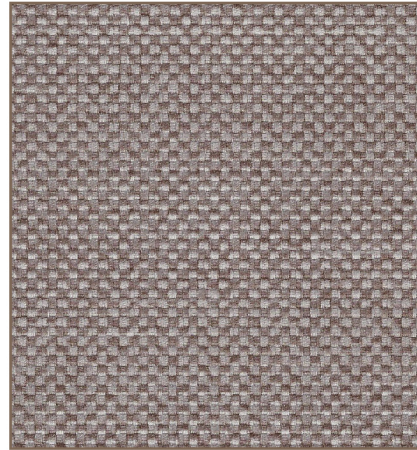
KAL-4408
KALEIDOSCOPE TAUPE



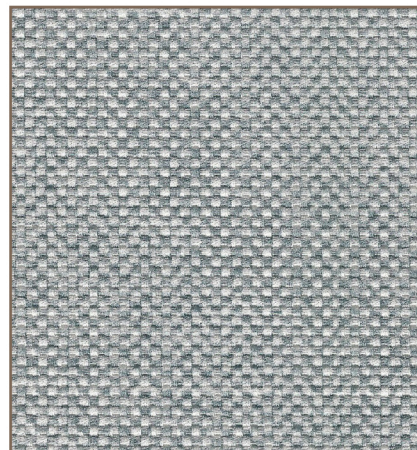
KAL-4404
KALEIDOSCOPE NEPTUNE



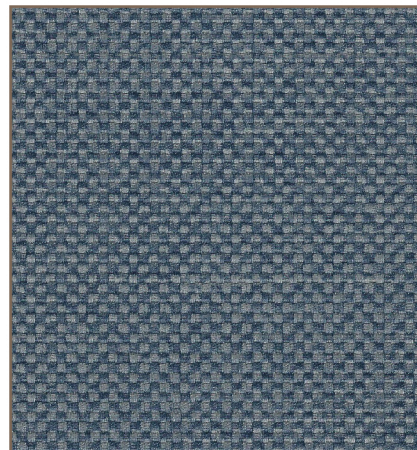
MAG-1966
MAGLIA TRUFFLE



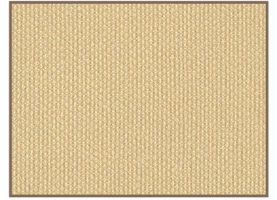
MAG-1965
MAGLIA DRIFTWOOD



MAG-1967
MAGLIA ALASKA



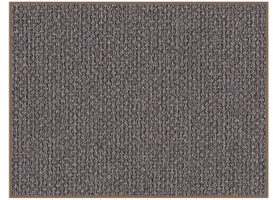
MAG-1959
MAGLIA INDIGO



STX-8808
SILVERTEX CHAMPAGNE



CHA-1530
CHAMBRAY LIMESTONE



STX-8824
SILVERTEX METEOR



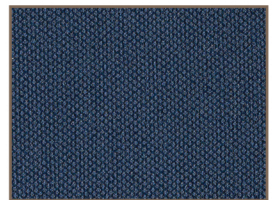
CHA-1536
CHAMBRAY GREY



STX-8830
SILVERTEX NEUTRA



CHA-1532
CHAMBRAY MOCHA

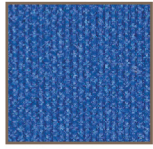


STX-8805
SILVERTEX JET



CHA-1535
CHAMBRAY LT NAVY

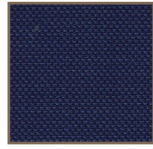
Silvertex



STX-8801
MARINE BLUE



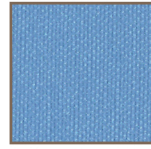
STX-8823
CARBON



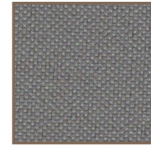
STX-8804
SAPPHIRE



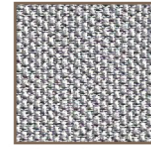
STX-8822
STORM



STX-8802
LAGOON



STX-8840
STERLING



STX-8839
PLATA



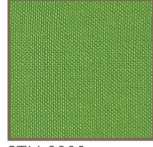
STX-8806
ICE



STX-8807
CREAM



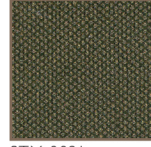
STX-8809
TAUPE



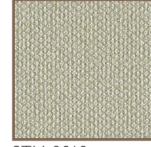
STX-8808
CRÈME DE MENTHE



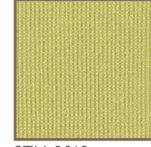
STX-8820
BASIL



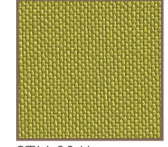
STX-8821
BOTTLE



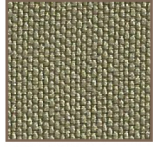
STX-8818
SAGE



STX-8819
CELERY



STX-8841
ZEST



STX-8835
PEAT



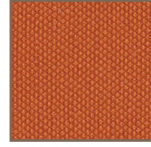
STX-8831
MARSH



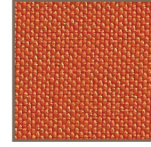
STX-8832
BRONZE



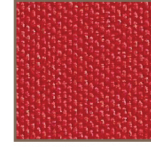
STX-8810
CHESTNUT



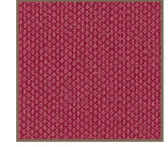
STX-8811
MANDARIN



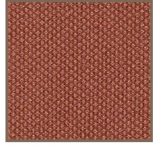
STX-8837
BAZAAR



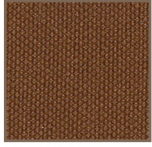
STX-8838
IMPERIAL



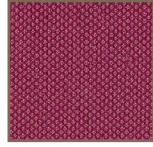
STX-8815
BORSCHT



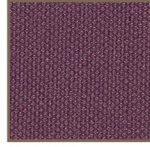
STX-8814
UMBER



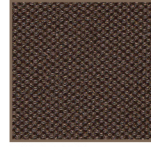
STX-8813
LUGGAGE



STX-8816
RASPBERRY



STX-8817
BLACKBERRY



STX-8825
MOCHA

Patriot Plus



PAT-8501
ADOBE WHITE



PAT-8602
OATMEAL



PAT-8504
SAND



PAT-8603
LARK



PAT-8506
PUTTY



PAT-8610
SABLE



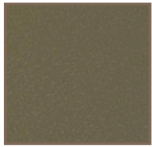
PAT-8611
TERRA COTTA



PAT-8516
CHESTNUT



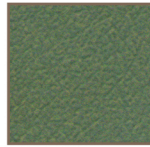
PAT-8517
MOCHA



PAT-8626
EUCALYPTUS



PAT-8584
TAUPE



PAT-8625
CYPRESS



PAT-8553
YEW GREEN



PAT-8623
SAGE



PAT-8624
GRANNY SMITH



PAT-8571
FOREST



PAT-8581
DARK AQUA



PAT-8620
PEACOCK



PAT-8628
SEA



PAT-8560
AQUA GREY



PAT-8564
GROTTO



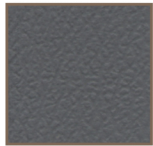
PAT-8546
COLONIAL BLUE



PAT-8572
BLUERIDGE



PAT-8539
GUNMETAL



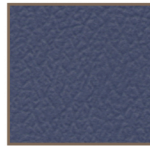
PAT-8605
CHARCOAL



PAT-8541
SPACE BLUE



PAT-8542
ROYAL



PAT-8544
SAPPHIRE



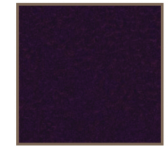
PAT-8582
IMPERIAL BLUE



PAT-8547
MIDNIGHT BLUE



PAT-8576
DEEP PHOENICIAN



PAT-8618
AUBERGINE



PAT-8540
BLACK



PAT-8567
DOVE



PAT-8604
CONCRETE



PAT-8561
MULBERRY



PAT-8615
BERRY



PAT-8533
PORT



PAT-8532
BORDEAUX



PAT-8569
BURGUNDY



PAT-8577
PURPLE GREY



PAT-8613
ORANGE KIST



PAT-8614
SALSA



PAT-8528
AMERICAN BEAUTY

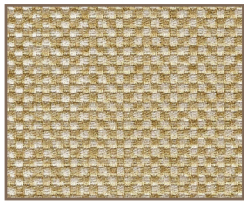


PAT-8529
PAPRIKA

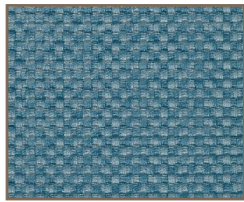


PAT-8579
RUBY

Maglia



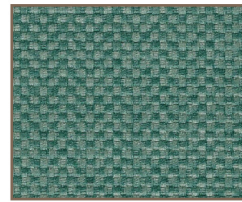
MAG-1951
DESERT



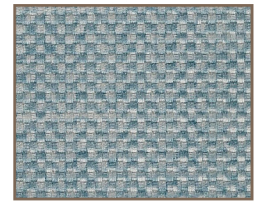
MAG-1952
SAPPHIRE



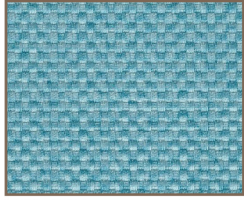
MAG-1953
VANILLA



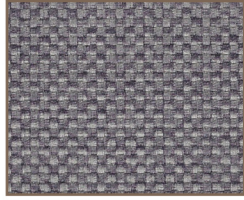
MAG-1955
VIRIDIAN



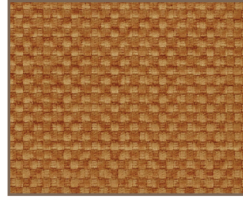
MAG-1957
SKY



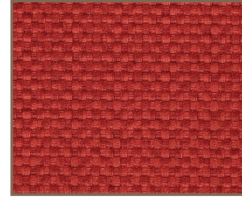
MAG-1958
AQUA



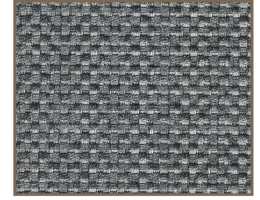
MAG-1960
WISTERIA



MAG-1962
CLAY



MAG-1964
ROSE

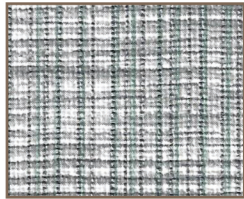


MAG-1968
THUNDER

Chambray



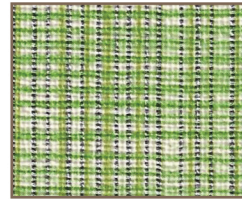
CHA-1526
AQUAMARINE



CHA-1527
CLOUD



CHA-1528
SAGEBRUSH



CHA-1533
GREEN GRASS

Whisper



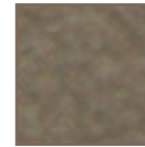
WHI-2150
FAWN



WHI-2141
CASHEW



WHI-2119
GRAVEL



WHI-2120
ANTELOPE



WHI-2118
CAMEL



WHI-2142
COGNAC



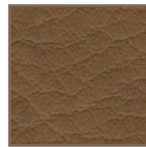
WHI-2123
LUGGAGE



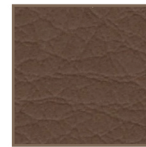
WHI-2125
CINNAMON



WHI-2121
CAPPUCCINO



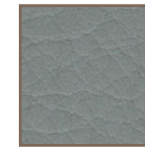
WHI-2151
OCHRE



WHI-2152
MAHOGANY



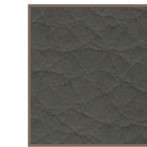
WHI-2153
TRUFFLE



WHI-2154
PEWTER



WHI-2138
ELEPHANT



WHI-2155
STORM



WHI-2155
STORM



WHI-2139
CHARCOAL



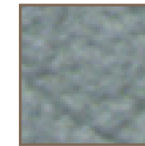
WHI-2117
BONE



WHI-2156
PUTTY



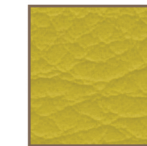
WHI-2157
FOG



WHI-2134
PATINA



WHI-2158
CUCUMBER



WHI-2159
ZEST



WHI-2160
SASSAFRAS



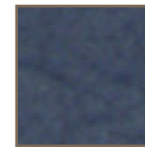
WHI-2161
MALLARD



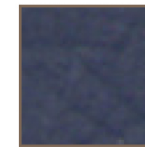
WHI-2162
PARADISE



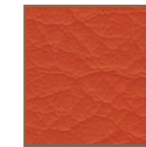
WHI-2163
INDIGO



WHI-2136
CERULEAN



WHI-2137
NAVY



WHI-2164
CAROTENE



WHI-2165
MOLTEN



WHI-2124
SALSA



WHI-2126
BORDEAUX



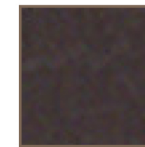
WHI-2166
BRICK RED



WHI-2127
MERLOT



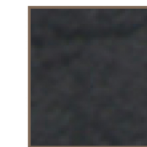
WHI-2144
SANGRE



WHI-2143
EXPRESSO



WHI-2129
FOREST



WHI-2140
BLACK

Composition

100% Polyester Hi-Loft ² ™ Backing						
100% Polyester Ultra Hi-Loft ² ™ Backing						
Poltester Cotton						
Weight (oz.)	30	30	30	34	30	27
Width (in.)	54	54	54	54	54	54
Roll Size (yd.)	30	30	30	30	30	30

	Chambray	Kaleidoscope	Maglia	Patriot Plus	Silvertex	Whisper
100% Polyester Hi-Loft ² ™ Backing	•	•	•			•
100% Polyester Ultra Hi-Loft ² ™ Backing					•	
Poltester Cotton				•		
Weight (oz.)	30	30	30	34	30	27
Width (in.)	54	54	54	54	54	54
Roll Size (yd.)	30	30	30	30	30	30

Codes*

UFAC - Class I	•	•	•	•	•	•
NFPA 260 - Class I	•	•	•	•	•	•
CA Tech Bulletin 117, Section E	•	•	•	•	•	•

	CHA	KAL	MAG	PAT	STX	WHI
UFAC - Class I	•	•	•	•	•	•
NFPA 260 - Class I	•	•	•	•	•	•
CA Tech Bulletin 117, Section E	•	•	•	•	•	•

Finishes and Treatments

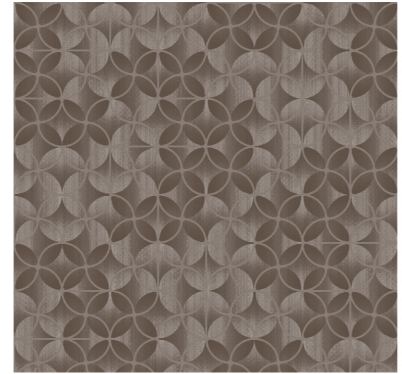
PERMABLOK³ ADVANCED VINYL PROTECTION						
Ag SILVERGUARD[®] SILVER ION TECHNOLOGY						
PBG⁺ PERMABLOK³ PERMAGUARD[®]	•	•				
Napa Finish						•
Mildew Resistant Backing and Face	•	•	•	•	•	•
UV Stabilized Pigments (1000 hours) <small>Xenotest AATC™ 16-3 / NTC 1479 / CFA-2 a1</small>	•	•	•	•	•	•
Cold Crack <small>CFA-6A</small>	-10°F	-10°F	-10°F	-20°F	-10°F	-20°F
Superior Abrasion <small>CFA 1-3 / ASTM D-4157 100,000 cycles, Wyzenbeek #10 Cotton Duck</small>	•	•	•	•	•	•

	CHA	KAL	MAG	PAT	STX	WHI
PERMABLOK ³				•	•	•
Ag SILVERGUARD [®]						•
PBG ⁺ PERMABLOK ³	•	•				
Napa Finish						•
Mildew Resistant Backing and Face	•	•	•	•	•	•
UV Stabilized Pigments (1000 hours)	•	•	•	•	•	•
Cold Crack	-10°F	-10°F	-10°F	-20°F	-10°F	-20°F
Superior Abrasion	•	•	•	•	•	•

Applications

Automotive RV	•	•		•	•	•
Education		•	•	•	•	•
Healthcare		•	•	•	•	•
Office	•	•	•	•	•	•
Hospitality						
Hotel Motel Casino	•	•	•	•	•	•
Restaurant	•	•	•	•	•	•
Theaters Convention Centers	•	•	•	•	•	•
Marine						
Interior	•	•	•	•	•	•
Exterior					•	
Residential						
Interior	•	•	•	•	•	•
Exterior					•	

	CHA	KAL	MAG	PAT	STX	WHI
Automotive RV	•	•		•	•	•
Education		•	•	•	•	•
Healthcare		•	•	•	•	•
Office	•	•	•	•	•	•
Hospitality						
Hotel Motel Casino	•	•	•	•	•	•
Restaurant	•	•	•	•	•	•
Theaters Convention Centers	•	•	•	•	•	•
Marine						
Interior	•	•	•	•	•	•
Exterior					•	
Residential						
Interior	•	•	•	•	•	•
Exterior					•	



Kaleidoscope Repeat: 18" x 18"



• - Designates a product is an EcoSense item.

All EcoSense products are produced without phthalates, fire retardants or antimicrobials.



SPRADLING USA
Corporate Headquarters
200 CAHABA VALLEY PARKWAY
P.O. BOX 1668 | PELHAM, AL 35124
PHONE 800-333-0955
FAX 205-985-2354 | 205-985-9176
EMAIL sales@spradlingvinyl.com
SPRADLINGVINYL.COM

USA LOCATIONS
Pelham, Alabama
La Mirada, California
Grand Rapids, Michigan
Westampton, New Jersey
Maryville, Tennessee

INTERNATIONAL LOCATIONS
Europe (Spain | UK | Germany)
Mexico

2/2019



Made exclusively for Spradling USA by Proquinal S.A., Colombia, and Proquinal Costa Rica S.A. - An ISO 9001, TS 16949 company.

WARNING: This product can expose you to chemicals, including diisononyl phthalate (DINP), which is known to the state of California to cause cancer. For more information, go to www.P65Warnings.ca.gov

PERMABLOK³® Care and Cleaning Guide

STEP 1	Common stains: eye shadow, mascara, grease, black felt tip pen, crayon, chocolate, suntan lotion, and hair/body oils* Remove excess spill with a damp cloth. Use a 1:1 mix of Ivory® liquid soap and water. Rub gently with a soft clean cloth, rinse with clean water and dry.
STEP 2	Common stains: red lipstick Use a straight application of concentrated cleaners such as Formula 409® or Fantastik® spray cleaner. Rub gently with a soft clean cloth, rinse with clean water and dry.
STEP 3	Common stains: blood, urine, feces, and oil-based paint Use a 1:1 mix of ammonia and water, or a 1:10 mix of bleach and water. Rub gently with a soft clean cloth, rinse with clean water and dry.
STEP 4	All other tough stains Use a cotton cloth saturated in a 1:1 mix of isopropyl alcohol and water. Rub gently in a circular motion 10 times. Pat dry and check the results. If the stain persists, use straight alcohol and rub the stain again using the circular motion. Rinse thoroughly with clean water and pat dry.

*Must be cleaned after each instance of exposure to hair and body oils.

The information published in this care guide refers to the performance of PERMABLOK³® products in specific tests conducted under laboratory conditions. Results may vary under actual conditions.

PERMABLOK³® is a registered trademark of Spradling Holdings, Inc.

PBG+® Care and Cleaning Guide

STEP 1	Common stains: baby oil, ketchup, chocolate, motor oil, olive oil, tea, coffee Use a clean dry cloth to remove the residue, careful not to spread to surrounding areas. With a clean area of the cloth, wipe the spot again more vigorously, to clean off any remaining residue. If a stain is still visible, proceed to step 2.
STEP 2	Common stains: eye shadow, crayon, grease, permanent felt tip marker, mustard, lipstick, ballpoint pen Use a straight application of concentrated Formula 409® or Fantastik®. Wipe with a soft clean cloth, rinse with clean water and dry. If stain persists, proceed to step 3.
STEP 3	More difficult stains Use a cotton cloth soaked in 91% isopropyl (rubbing) alcohol. Wipe carefully to remove residue without spreading to surrounding areas. With a clean area of the cloth, rub the spot vigorously in a circular motion. For highly textured material, use a soft toothbrush to clean valleys and crevices. Wipe with a soft clean cloth, rinse with clean water and dry.

*Please note that PBG+® is not "stain proof" and indelible inks, particularly those containing certain dyes used in permanent felt tip markers, can leave a shadow if cleaning is delayed beyond 24 hours. Results are best when cleaned within the first 24 hours of staining.

PBG+® is a registered trademark of Spradling Holdings, Inc.

NAPA™ Care and Cleaning Guide

STEP 1	Light soiling Remove excess spill with a damp cloth. Use a solution of 10% household dish soap in warm water. Rub gently with a soft clean cloth, rinse with clean water, and dry.
STEP 2	Heavy soiling Dampen a soft white cloth with a one-to-one (1:1) solution of warm water and an approved cleaner, such as Formula 409® or Fantastik®. Rub gently, rinse with a clean water-dampened cloth, and dry.
STEP 3	More difficult stains Dampen a soft white cloth with a solution of 10% household bleach and warm water. Rub gently, rinse with a clean water-dampened cloth to remove bleach concentration, and dry.

*Please note that PBG+® is not "stain proof" and indelible inks, particularly those containing certain dyes used in permanent felt tip markers, can leave a shadow if cleaning is delayed beyond 24 hours. Results are best when cleaned within the first 24 hours of staining.

PBG+® is a registered trademark of Spradling Holdings, Inc.

This information is not a guarantee and does not relieve the user from the responsibility of the proper and safe use of the product and all cleaning agents.

The use of certain agents can be harmful to the surface appearance and lifespan of vinyl. Spradling, its agents, and assigns assume no responsibility resulting from the use of such cleaning agents to the vinyl.

Certain clothing and accessory dyes (such as those used on denim jeans) may migrate to lighter colors. This phenomenon is increased by humidity and temperature and is irreversible. Spradling USA will not assume responsibility for dye transfer caused by external contaminants. Please check compatibility when using this product in combination with painted or varnished surfaces.